

MARINER

SHIPBUILDING - CHARTER - BROKERAGE

190 ft. DECK CARGO VESSEL



NEW CONSTRUCTION AVAILABLE FOR CHARTER

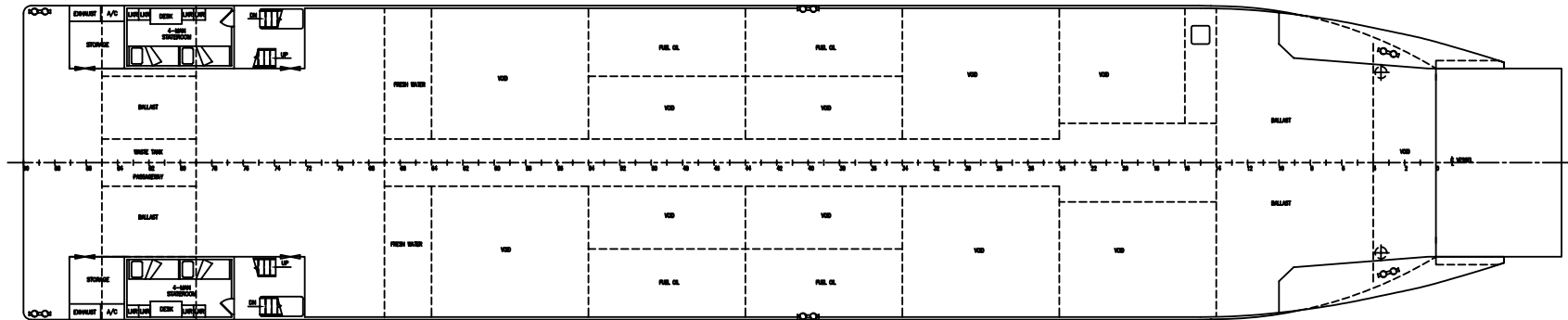
LOA:	190 ft	ENGINES:	(2) Cummins KTA38-M3
BEAM:	40 ft	HP TOTAL:	2400 hp
DEPTH:	11 ft	SPEED:	14 Kts
DRAFT:	8 ft	Generators:	(2) 75kW
Cargo:	750 T	FUEL:	+/- 40,000 gal
FLAG:	USA	RAMP:	24'W x 28'L
Cert:	ABS Load Line	RAMP Cap:	70 T

MARINER, LLC

P. O. BOX 84579 - BATON ROUGE, LOUISIANA 70884
PH: 225-405-5353 - FAX: 985-384-0339
www.marinershipyard.com

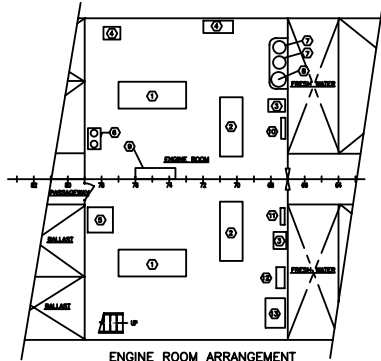
MARINER



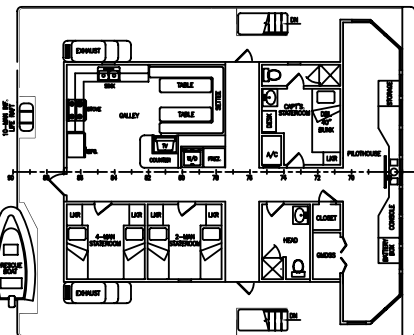


MAIN DECK ARR'G'T.

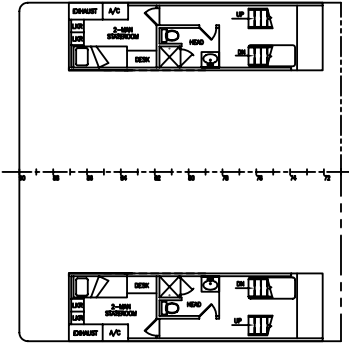
BILL OF MATERIALS	
NO.	DESCRIPTION
1	PLATE
2	ANGLE
3	PIPE
4	WELD
5	FASTENER
6	VALVE
7	PIPE
8	FLANGE
9	PIPE
10	FLANGE
11	PIPE
12	FLANGE
13	PIPE
14	FLANGE
15	PIPE
16	FLANGE
17	PIPE
18	FLANGE
19	PIPE
20	FLANGE



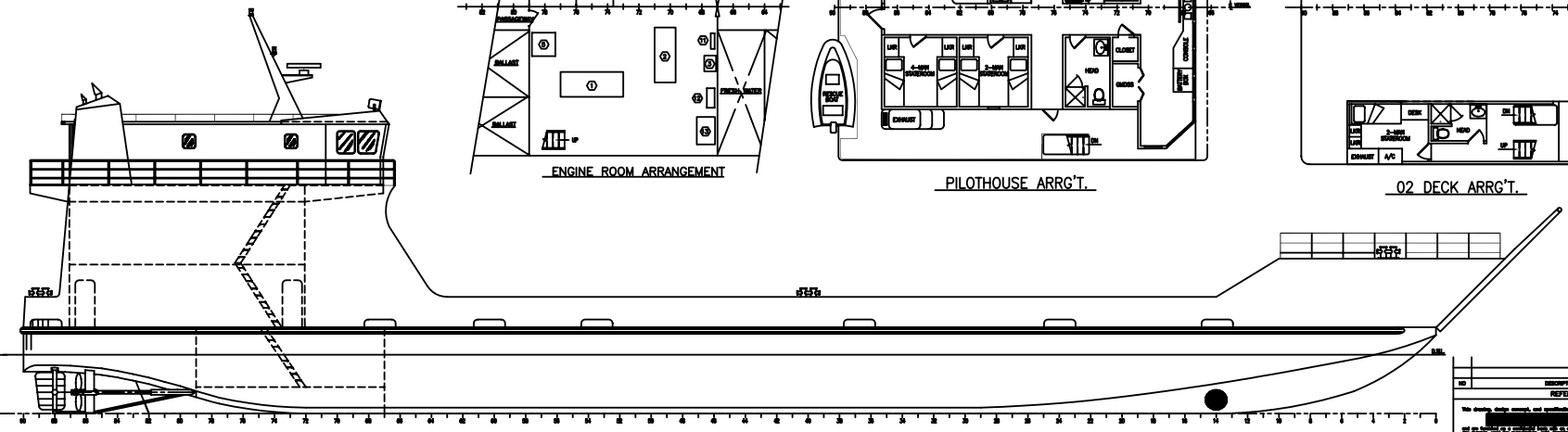
ENGINE ROOM ARR'G'T.



PILOTHOUSE ARR'G'T.

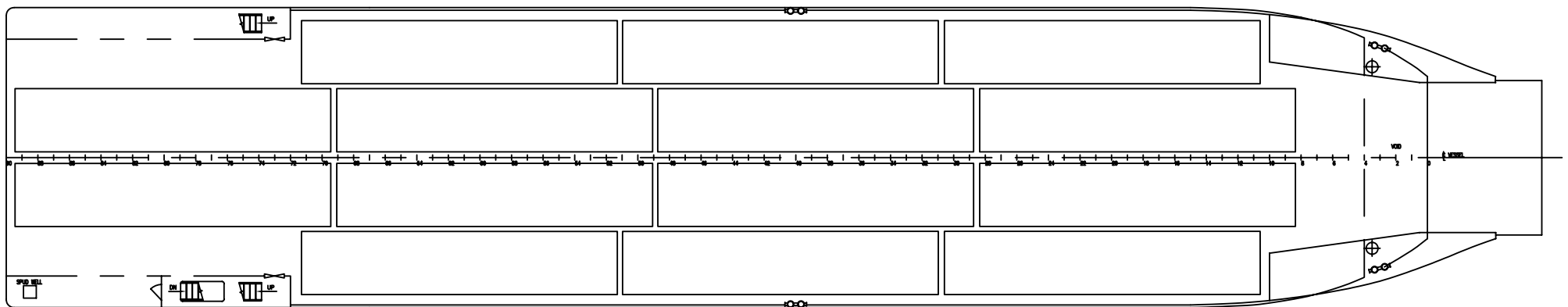


02 DECK ARR'G'T.



OUTBOARD PROFILE

NO.	DESCRIPTION	REV. NO.
10	REFERENCES	
<p>We hereby certify that the information on this project of [REDACTED] was prepared by [REDACTED] and that the same is true and correct to the best of our knowledge and belief.</p>		
<p>P.O. BOX 1450 - BEAVER CREEK, COLORADO 80501 - (303) 832-8827 PROFESSIONAL ENGINEERS - MARINE ARCHITECTS</p>		
<p>MARINER, LLC 190' x 40' x 11'-0" DECK CARGO VESSEL OUTBOARD PROFILE & GENERAL ARRANGEMENT</p>		
REV. NO.	DATE	DESCRIPTION
1/24/08	3/18/11	100-00-0108



CONTAINER LAYOUT